

CERTIFIED LAND CORNER RECORDATION

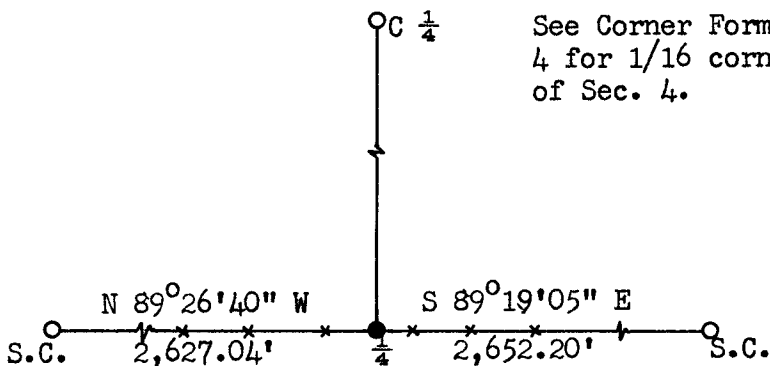
DESCRIPTION OF CORNER EVIDENCE FOUND, AND ORIGINAL RECORD (If known)

LOCATION Found 6" x 8" x 16" granite stone with "1/4", tipped.
 1/4 S. 4 G.L.O. record - Granite boulder, 15 x 7 x 9. Contract survey by
 1/4 S. 9 Henry G. Hay in 1870.
 T.14N., R.69W.
 6th P.M.

DESCRIPTION OF MONUMENT AND ACCESSORIES ESTABLISHED TO PERPETUATE THE ORIGINAL LOCATION OF THIS CORNER:

At the corner: Set a 1 1/2" dia. x 30" long iron pipe with brass cap.
 Accessories: Left stone as memorial.

SKETCH, WITH COURSE AND DISTANCE TO ADJACENT CORNER IF DETERMINED IN THIS SURVEY.
 (May Sketch or Paste Reproduction on Reverse Side.)



See Corner Form for the C 1/4 of Sec. 4 for 1/16 corners set in the N 1/2 of Sec. 4.



Not to scale

Brass cap set 6" above ground.

Brass cap stamped:

T.14N. R.69W.
 1/4 S. 4
 1/4 S. 9
 LS 519 1972

I, R.L. Hudson certify that I have carefully performed ~~or reviewed~~ the work done on the diagrammed corner as reported on this recordation form and approve the same.

R.L. Hudson Wyoming L.S. No. 519
 Signature of Surveyor Registration No.

STATE OF WYOMING,
 Office of Clerk and Recorder,
 County of Laramie

This "corner record" was filed for record on the 30th day of October, 1972, was noted on the cross-index plat and is assigned page No. 14-69, in book No. 0 ME

Jolly A. Hillman
 County Official

Cross Index No. _____	T. _____	R. _____	Mer. _____
_____	T. _____	R. _____	Mer. _____
_____	T. _____	R. _____	Mer. _____
_____	T. _____	R. _____	Mer. _____
_____	T. _____	R. _____	Mer. _____
_____	T. _____	R. _____	Mer. _____
_____	T. _____	R. _____	Mer. _____

The State of Wyoming } ss
County of Laramie

This instrument was filed for record
at 2:05 o'clock P. M. on the
30th day of October,
A. D. 19 22 and duly recorded in
book

John W. Williams

County Clerk & Ex-Officio Register of Deeds
Deputy